

Connect Serial Instruments to your PC with the new...

Windmill COMIML

COMIML lets you read and control almost any serial device communicating over RS232, RS422, RS485 or Modbus. These include such diverse equipment as electronic balances used in a laboratory, GPS receivers used in the field and data loggers used in process plant.

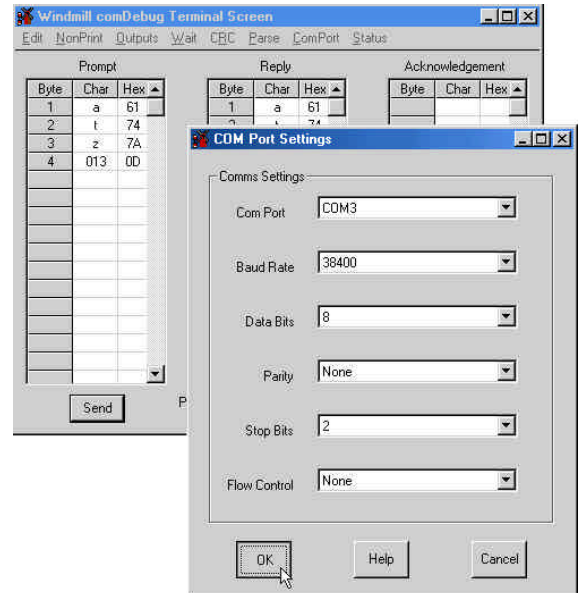
The COMIML driver reads data from your PC's COM port, and passes it to the Windmill logging, charting and DDE panel programs. You can also use other Windows software, like Excel, to display and analyse the data.

Try Before You Buy

You enter and save all your serial communications settings with a stand-alone program called comDebug. To enable you to test whether Windmill COMIML will work with your device, you can download a free copy of comDebug from our web site! See <http://www.windmillsoft.com/comiml.html>

Features

- Try before you buy—confirm Windmill can read your equipment before purchasing
- Includes the Windmill 5 logging, charting, DDE panel, output control and terminal emulator applications
- Route data to Excel, Access and most other Windows software
- No programming required
- Integrate several devices into one system
- Send commands to the device and extract data from its replies.
- For equipment communicating over RS232, RS422, RS485 and Modbus
- No more typing data into spreadsheets—save time and eliminate errors
- For Windows 95 and later
- Easy-to-use
- Free technical support for life



Simply select your settings or type your instrument's commands: no need for any programming.

Majority of Serial Devices Supported

COMIML can control both those devices that continuously output data values as though to a printer, and those that require a command message each time data values are needed. It can understand both ASCII and binary messages, and insert cyclic redundancy checks. With a flexible approach to building command strings, and parsing the received data strings to extract readings, the majority of instruments are supported. These include sonar, gas analysers, pH transmitters, titrators, particle analysers and conductivity meters.

Optional Extras

You can expand your system by choosing any of the optional Windmill software modules, including: *Graphics* for process mimics; *Alarm Logger* for alerts by telephone; *Windmill Remote* for data acquisition over the internet and *IML Tools* for programming your own Visual Basic applications. You can also integrate other types of hardware into your system using the Windmill drivers for Ethernet, GPIB, USB and ISA-bus devices.

Price

The COMIML driver, with Windmill 5, costs £145 (around US\$210 or €230). You can buy COMIML from our on-line shop, saving shipping costs. Visit <http://www.windmillsoft.com/>



Windmill COMIML Specifications

Operating System:

Windows 95 or later (including Windows NT, Windows 98, Windows 2000 and Windows ME)

Minimum System Requirements:

486 processor, 8 MB RAM, VGA Graphics

Communications supported:

RS232, RS422, RS485, Modbus
(RS422 & RS485 require COM port adapters)

Maximum number of devices handled at one time by COMIML:

10

Data format:

ASCII values
Twos complement integer LSB-MSB
(-32768 to +32767)
Twos complement integer MSB-LSB
Word LSB-MSB (0 to 65535)
Word MSB-LSB
Signed byte
Byte
Single bit
Floating point

COM port lines:

View state of CTS, DCD, DSR, RI, RTS and DTR
Control state of RTS and DTR

Message formats:

ASCII, Binary, Hexadecimal

COM port addresses:

COM1 to COM24

Baud rates:

1200, 2400, 4800, 9600, 19200, 38400

Parity:

None, even, odd, mark, space

Data bits:

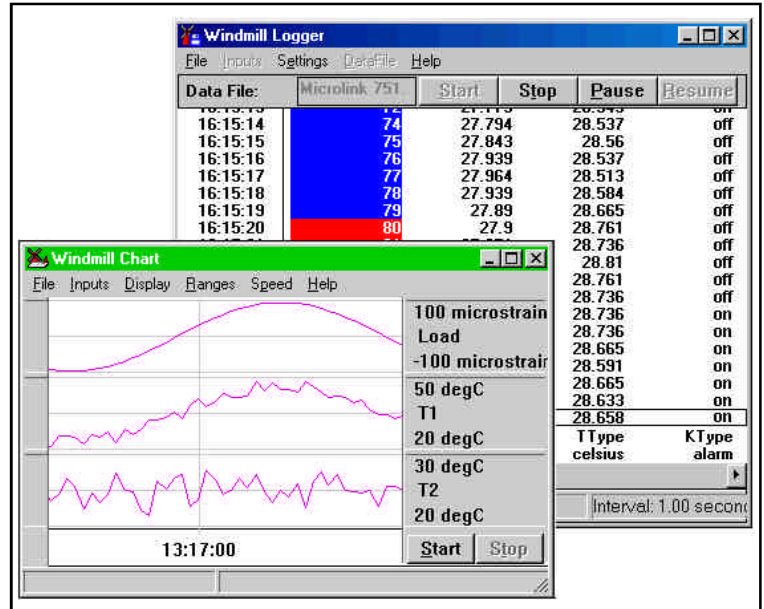
7 or 8

Stop bits:

1 or 2

Flow control:

None, hardware, Xon/Xoff (software)



Log and chart data with the Windmill COMIML package

Parsing:

Search for characters and ignore characters before extracting data

Collecting data:

Time stamp all readings
Set alarms
Log continuously or start a new file each hour, day or week
Acquire data with Excel or other Windows program in real-time
Chart data in real-time
Control digital or analogue outputs

Expansion capabilities:

Hardware Drivers: add USB, Ethernet, GPIB and ISA-bus device drivers
Optional Software Modules:
Windmill Graphics for process mimics
Windmill Alarm Logger for remote alarm alerting
Windmill IML Tools to speed up your own programming with Visual Basic or Javascript
Windmill Remote for monitoring over the internet
Windmill Replay for replaying logged data graphically
Windmill Test Sequence to interpret a file of commands and control a test rig accordingly
Windmill Test-Seq for incinerators for emission monitoring

